

**TAKEX**

# Wafer mapping sensor

ASW Series

To detect Silicon Carbide, Sapphire,  
Silicon and other translucent wafers.



(12 Inch)



(8 Inch)



(6 Inch)

Applicable to 6, 8  
and 12 inch wafers

Translucent wafer  
mode (8 and 12  
inch models)

Free from  
Electrostatic effects  
(comb sensor unit)

# The wafer mapping sensor speeds up the sensing process while maintaining reliable detection.

## POINT 01

Equipped with two detection modes the sensor is capable to detect the latest high transmittance wafers. (8 and 12 inch models)

Normal mode : Wafers of 30% or less transmissivity

Latch mode : Wafers of 70% or less transmissivity (\*1)

(\*1): Latch mode is for detecting an edge of a wafer. Perform detection test in advance.  
The sensor may not detect the edge depending on the thickness or shape of the wafer.

- Reliably detects SiC single crystal and other translucent wafers.
- Mixed wafers like Silicon and glass wafers in a cassette are detectable.

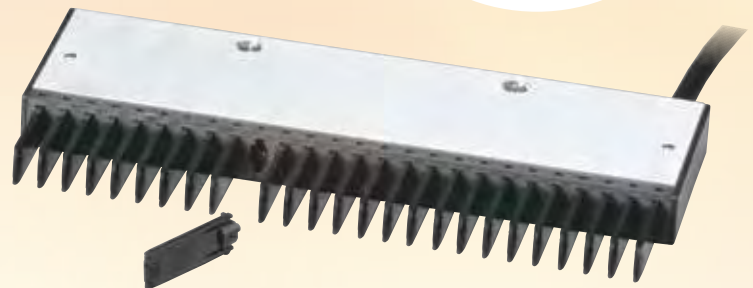
## POINT 02

Each comb (sensor unit) can be replaced in a single operation.  
Easy maintenance !



Easy maintenance

Cost saving



## POINT 03

Electrostatic malfunction free

The comb unit contains only optical structures with no electrical parts.

### ● Output inhibit function

Enables to inhibit all outputs regardless to the sensor state.

Two sensors connected in parallel can be controlled by a single input.

### ● Remote teaching and light emission inhibit function

The output operation can be checked by the light emission inhibit function. Teaching is restarted when the function is reset and the sensor gains the best sensitivity.

### ● Trouble output and self diagnosis function

Generates an alarm during the teaching process. Each channel output turns on and off consecutively when a trouble occurs such like low receiving light intensity, comb breakage or foreign light disturbance.

### ● CE compliant

8 and 12 inch models are CE compliant.

### ● Robot cable and discrete output

All models are equipped with discrete output for each channel.  
Highly flexible robot cable is employed for 6 and 8 inch models.



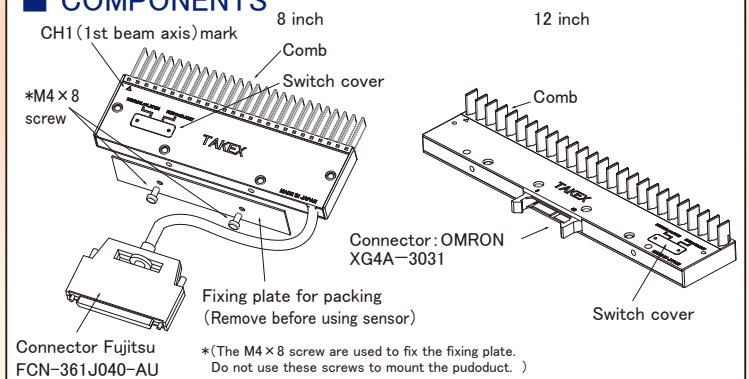
## SPECIFICATIONS

Model	ASW-SG625AP	ASW-SG85F	ASW-SG85F-Y05	ASW-SG86F	ASW-SG86F-Y05	ASW-SG125VF
Applicable Wafer	6 inch transmittance: 30% or less	8 inch normal mode: transmittance: 30% or less latch mode: transmittance: 70% or less			12 inch normal mode: transmittance: 30% or less latch mode: transmittance: 70% or less	
Number of channels	25ch	25ch		26ch		25ch
Wafer pitch	4.76mm	6.35mm				10.0mm
Detection method	Through beam					
Comb	Replaceable					
Power supply	DC24V ±10% ripple 10% or less				DC12~24V ±10% ripple 10% or less	
Current consumption	250mA or less	1.8W or less			1.9W or less	
Operation mode	Dark ON ON/OFF when trouble	Dark ON Normal mode / Latch mode selectable(with switch) ON/OFF when trouble				
Output mode	NPN open collector	Rating: sink current 30VDC or less, 20mA or less			NPN open collector Rating: sink current 30VDC or less, 30mA or less	
Response time	12ms or less				35ms or less	
Light source	Infrared LED(830nm)	Infrared LED(870nm)				
Light emission inhibit input / re-teaching (self diagnosis function)	Open collector input or contact input Light emission inhibit ON: 1.5V or less OFF: 4V or more					
	Light emission inhibit at ON Re-teaching at OFF.	Normal mode: Light emission inhibit at ON. Re-teaching at OFF. Latch mode: Reset the latch output and inhibit light emission at ON. Re-teaching at OFF.				
Output inhibit input	Open collector or contact input Output inhibit ON: 1.5V or less OFF: 4V or more					
Connection	Attached cable with connector (Fujitsu FCN-361J040-AU)					Connector type OMRON MIL connector XG4A-3031
	Cable length: 3m	Cable length: 3m	Cable length: 0.5m	Cable length: 3m	Cable length: 0.5m	
Material	Sensor unit : Polycarbonate Housing : Aluminum					
Mass	Approx. 330g	Approx. 390g	Approx. 250g	Approx. 400g	Approx. 260g	Approx. 270g (non including cable)
Accessories	Operation manual					

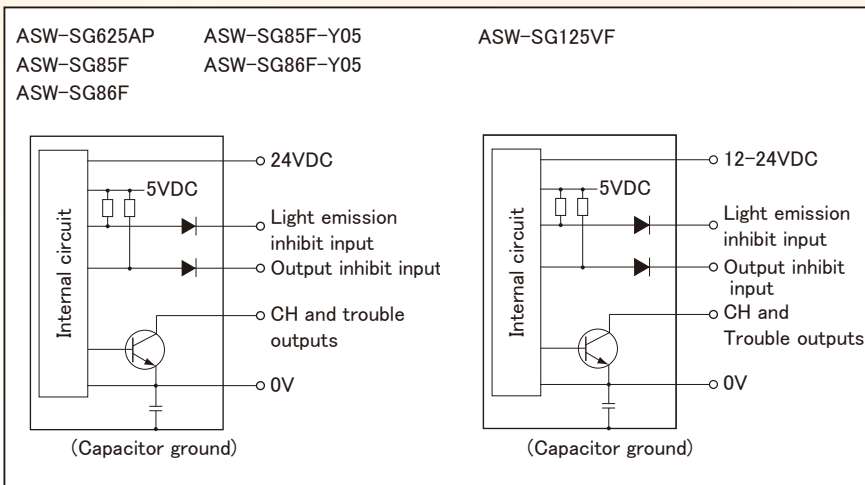
## OPERATING ENVIRONMENT

Ambient temperature	-10 ~ +55°C (non-freezing)
Ambient humidity	35 ~ 85%RH (non-condensation)
Protective structure	IP40
Ambient illumination	1500 lx or less
Vibration	10-55Hz double amplitude 0.5mm X, Y, Z directions, 2 hours each
Shock	300m/s <sup>2</sup> X, Y, Z directions, 3 times each

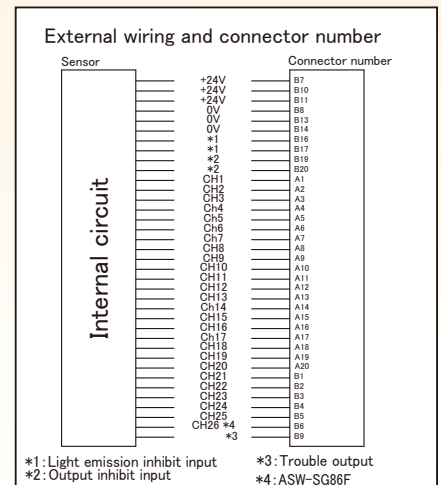
## COMPONENTS



## INPUT/OUTPUT CIRCUIT



## PIN CONFIGURATION DIAGRAM

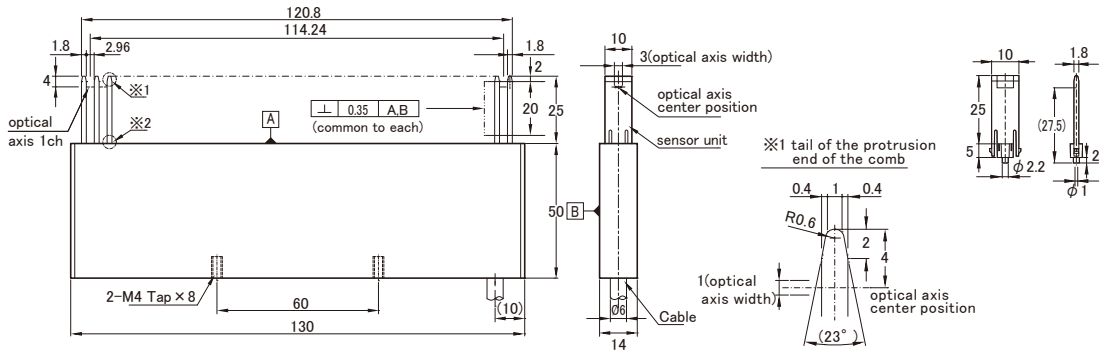


(For a noise prevention, a capacitor is installed between the 0V power supply and the sensor's aluminum case.  
Do not conduct withstand voltage Test between any input / output and the sensor case. )

ASW-SG625AP

The dimension shown in these drawing apply to the bottom end (※2), not the protrusion end(※1) of the comb.

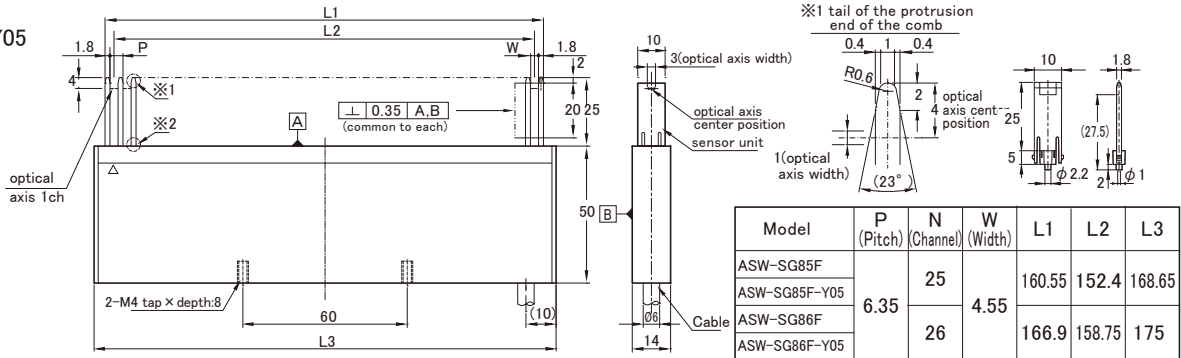
Comb sensor unit  
Model: ASW-F2500



ASW-SG85F  
ASW-SG85F-Y05  
ASW-SG86F  
ASW-SG86F-Y05

The dimension shown in these drawing apply to the bottom end (※2), not the protrusion end(※1) of the comb.

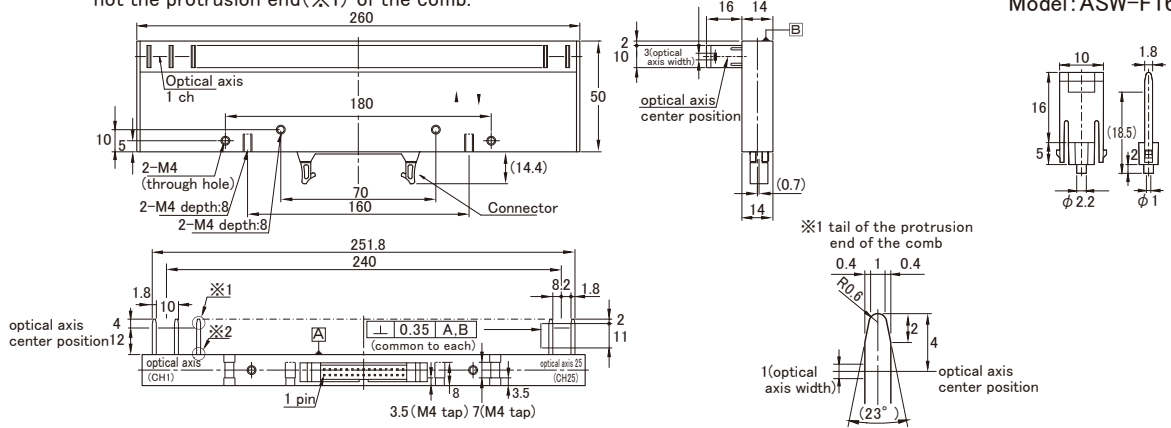
Comb sensor unit  
Model: ASW-F2500



ASW-SG125VF

The dimension shown in these drawing apply to the bottom end (※2), not the protrusion end(※1) of the comb.

Comb sensor unit  
Model: ASW-F1600



**CAUTION**

- This product is designed for industrial applications to detect a various kinds of objects. It has no function to prevent disasters, accidents, death or injuries.
- TAKEX will not held responsible for any damage or loss incurred due to accidents, faulty installation, abuse, misuse, improper maintenance or acts of God including lightning surge.
- This product can't be used as a safety equipment to protect human body.
- This product can't be used for usage or equipment that requires a high degree of reliability or considerable care or attention to safety.
- Carefully read the instruction manual attached to the product and use the product properly according to it.
- The specifications and dimensions in this catalog may be subject to change without notice.



Takenaka Sensor Group

**TAKENAKA ELECTRONIC INDUSTRIAL CO.,LTD.**

Headquarters : 20-1 Narano-cho, Shinomiya, Yamashina-ku, Kyoto, Japan

Tel: 81-75-581-7111 Fax: 81-75-581-7118

www.takex-elec.co.jp

info-ex@takex-elec.co.jp

Distributed by