

# TAKEX

## SENSING THE UNSEEN

---

Protecting what matters since 1959, TAKEX has built a legacy of excellence in precision sensing technologies. Our specialty? Active Infrared Beams for Perimeter Protection and Outdoor PIR for CCTV activation and Intruder Detection.

## TWIN BEAMS

Featuring our patented 'double modulation' technology for unsurpassed immunity to sunlight and artificial light sources, Twin Beams are ideal for protecting windows, doors, fence lines, entrances, and driveways.



<b>PB-30TK</b> up to 30m	<b>PB-60TK</b> up to 60m	<b>PB-100TK</b> up to 100m
-----------------------------	-----------------------------	-------------------------------

- 2 x synchronised high power beams
- double modulation for unsurpassed light immunity
- auto-gain control (AGC)
- 50,000 lux sunlight immunity
- IP55 housing

<b>PB-20TE</b> up to 20m	<b>PB-40TE</b> up to 40m	<b>PB-60TE</b> up to 60m
-----------------------------	-----------------------------	-----------------------------

as PB-30TK/60TK/100TK, plus:

- 4 selectable beam channels to prevent crosstalk
- vivid internal body stickers aid beam alignment procedure



NEW PRODUCT

**INTRODUCING**  
**PB-60TX**

**2 DISTANCE SETTINGS**  
**53% MORE ENERGY EFFICIENT**  
**REAL-TIME ALARM OUTPUT**

<b>PB-60TX</b> up to 60m
-----------------------------

as PB-60TE, plus:

- 2 selectable operation ranges: 30/60m
- selectable alarm output modes (standard/real time)
- advanced sound check for easy alignment
- insect-proof cable entry bushing

## QUAD BEAMS

The professional choice in outdoor protection, our Quad Beam detectors synchronise sixteen beam paths for maximum stability in severe weather conditions, perfect for long range perimeter intruder detection.



<b>PB-50FA</b> up to 50m	<b>PB-100FA</b> up to 100m	<b>PB-200FA</b> up to 200m
-----------------------------	-------------------------------	-------------------------------

- 4 x synchronised high power beams
- double modulation for unsurpassed light immunity
- auto-gain control (AGC)
- 50,000 lux sunlight immunity
- IP55 housing

<b>PB-IN-50HFA</b> up to 50m <b>KH</b>	<b>PB-IN-100HFA</b> up to 100m <b>KH</b>	<b>PB-IN-200HFA</b> up to 200m <b>KH</b>
---	---	---

as PB-50FA/100FA/200FA, plus:

- 4 selectable beam channels to prevent crosstalk
- environmental monitoring circuit
- vivid internal body stickers aid beam alignment procedure

<b>PB-IN-100AT</b> up to 100m <b>KH</b>
--

as PB-IN-100HFA, plus:

- anti-crawl beam for high-security applications
- independent activation of upper or lower beams
- dual response time system



<b>PXB-50HF</b> up to 50m	<b>PXB-100HF</b> up to 100m	<b>PXB-200HF</b> up to 200m
------------------------------	--------------------------------	--------------------------------

as PB-IN-50HFA/100HFA/200HFA, plus:

- increased beam separation minimizes nuisance alarms
- vivid internal color aids beam alignment procedure
- lightning and surge protection up to 15kV
- ±90° horizontal ±20° vertical adjustable sensor heads
- IP65 housing

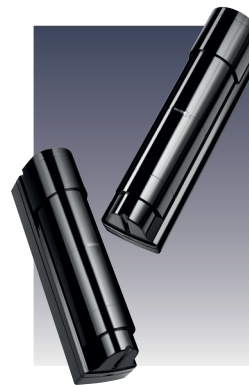
## BATTERY BEAMS

Designed for compatibility with leading wireless systems, our Battery Beams are ideal for rapid deployment in creating temporary or permanent secure perimeter intruder systems.



<b>TXF-20TDM</b> up to 20m
-------------------------------

- easy to install, no cables required
- stack multiple units without crosstalk
- long-lasting battery life (up to 3 years)
- high sunlight immunity
- compatible with your preferred wireless panel manufacturer
- IP55 weather resistance



**IDEAL FOR RAPID DEPLOYMENT**  
**PROTECT REMOTE PERIMETERS**  
**WITHOUT POWER**

<b>TXF-125DM</b> up to 100m
--------------------------------

as TXF-20TDM, plus:

- quad beam detection
- 4 selectable operation ranges: 25/50/75/100m
- IP65 housing

## BEAM TOWER ENCLOSURES

For additional security, or to disguise the number and position of beams from observers, our Beam Towers comprise of attractive but rugged floor or wall mounted units, with single and double-sided variants.



<b>TAS</b> single sided	<b>TAD</b> double sided	<b>TAW</b> wall mounted
----------------------------	----------------------------	----------------------------

TA series Beam Towers for use with KH Beams

- available in 1m, 1.5m, 2m, and 3m heights (TA<sup>2</sup>100/150/200/300)
- anodized aluminium column
- tamper protected lid to prevent unauthorised interference
- vandal resistant polycarbonate covers

**KH Beams are designed for use in TA series Beam Towers**



## PRE-WIRED TOWERS

2m single or double-sided beam towers pre-wired and installed with heaters, thermostats, tamper switches, and mounting brackets for beams - simply mount your chosen KH series quad beams and align to create robust perimeter intruder systems with ease.

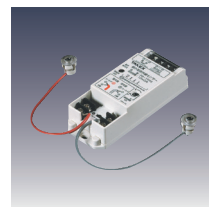
<b>TA-2PW SERIES</b> 2 beams per side	<b>TA-2PW3 SERIES</b> 3 beams per side
--	---

as TAS/TAD, plus:

- available in 2m height, single-sided (180°) or double-sided (360°)
- pre-wired and ready to install
- includes heaters, thermostat, tamper switch, and beam mounts
- compatible with KH series Beams

## MINIATURE BEAMS

For covert/prestige applications including ATMs, motor driven shutters, windows, and corridors.



<b>PB-10NS</b> up to 10m indoor
------------------------------------

- miniaturised control box for easy installation
- sensor cord can be cut to length as required
- supplied with flush mounting plates for sensor heads

## ATTENTION SENSORS

Provide messages, protect doors, deter intruders, or trigger warnings.



<b>AV-100E</b> N/O input to trigger	<b>PV-12E</b> integrated 12m PIR
--	-------------------------------------

- record a message (up to 12 secs.) using built-in microphone
- omni-directional bracket
- memory back-up for 20 days without power
- horn speaker type 100dB/1m (max)

## REFLECTIVE BEAMS

For applications where a beam-break is desirable but running cable to both ends is impractical. Ideal for short-distance monitoring of entrances and exits, corridors, staircases, gateways, and driveways.



**PR-5B**  
up to 5m indoor

- cable only to one end
- compact design for unobtrusive protection
- for indoor use



**PR-11B**  
up to 11m outdoor

as PR-5B, plus:

- beam direction can be rotated a full 180 degrees
- for indoor (up to 15m) and outdoor (up to 11m) use
- IP55 housing



The PR-30BE uses Time of Flight technology to measure both light reception level and timing.

**PR-30BE**  
up to 30m outdoor

as PR-11B, plus:

- Time of Flight technology to determine detecting distance
- measures light reception & timing for improved accuracy
- for indoor (up to 40m) and outdoor (up to 30m) use
- environmental monitoring circuit

## FLAME SENSORS

WHAT IF YOU COULD BE ALERTED TO A FIRE RISK BEFORE IT BECOMES A BLAZE?

Use with existing intruder/CCTV systems to bring immediate attention to the use of lighters, matches, and other open flames.



**FS-1000E** built-in sounder  
**FS-2000E** built-in sounder  
**FS-5000E** indoor/outdoor

- up to 10m detection of 7cm flame
- adjustable detection area (FS-2000E only)
- battery or DC operation (FS-1000E only)
- omni-directional bracket for detection area adjustment (FS-5000E only)



**FP-2500E**  
integrated 10m PIR

- combination UV flame sensor + PIR with pet immunity
- up to 10m detection of 7cm flame
- AND/OR detection modes
- dual output with forced alarm during sustained flame



**FP-5500E**  
integrated 15m PIR

as FP-2500E, plus:

- with integrated 15m wide angle PIR
- omni-directional bracket
- for indoor and outdoor use

## MULTI-PATTERN PIR



Choose between wide-angle, curtain, or long range detection, install vertically for standard detection or horizontally as a door sensor.

**MS-100E**  
up to 20m

- 10m Wide Angle / 10m Curtain / 20m Long Range
- 2 lenses for up to 4 different detection patterns
- 180° rotating sensor head for vertical or horizontal mount
- for indoor and outdoor use

## DUAL-ZONE PIR

Our Dual-Zone PIR's combine a horizontal and downward curtain requiring simultaneous activation for alarm. With up to 12m x 180° range these sensors are perfect for use in both domestic & industrial applications.



replacement lenses available in Black & White

**MS-12TE**  
up to 12m x 90°

**MS-12FE**  
up to 12m x 180°

- dual-zone detection system
- 2-12m coverage
- rotating sensor heads (±90° horizontal adjustment)
- AND/OR detection modes (MS-12FE only)
- IP54 housing

**TX-114SR**  
up to 12m x 90°

**TX-114TR**  
up to 12m x 90°

**TX-114FR**  
up to 12m x 180°

as MS-12TE/FE, plus:

- powered by 3V to 9VDC alkaline or lithium battery
- compatible with numerous wireless transmitter units
- back box with back-tamper (TX-114TR/FR only)



**OMS-12FE**  
up to 12m x 180°

- dual-zone detection system
- 3-12m coverage
- fixed sensor heads
- front and back tampers
- IP54 housing



MX-12FAM includes a sophisticated anti-masking system designed to expose any attempt to defeat the sensor by obstruction.

**MX-12FAM**  
up to 12m x 180°

**MX-12FAMD**  
up to 12m x 180°

- dual-zone detection system (+ microwave, MX-12FAMD only)
- 2-12m coverage
- dual alarm signal outputs
- anti-masking technology with near-lens awareness
- front and back tampers
- durable area masks stored conveniently in-device

## HIGH-MOUNT PIR

The high-performance PIR-T sensor family offers the ultimate in detection versatility. Precision triple mirror optics and intelligent signal processing ensure accurate detection from a mounting height of 2m to 6m.



**PIR-T15AM**  
up to 15m x 80°

**PIR-T40NAM**  
up to 40m x 3.2m

- 4 selectable operation modes:
- 2m to 6m installation height (by operation mode)
- high-performance triple mirror optical system
- precise detection area adjustment using on-mirror LED's
- anti-masking function
- IP55 housing

## INDOOR PIR

The PA-6800 series ceiling mount PIR sensors combine a discreet compact appearance with outstanding performance at a low price. The sensor can be snapped in and out of its base unit for easy installation.



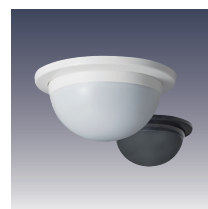
**PA-6805E**  
4m spot

**PA-6810E**  
15m x 360°

**PA-6812E**  
12m wide-angle

**PA-6820E**  
20m vertical curtain

- ceiling mount design
- 2m to 4.9m installation height
- detachable base unit with snap-in-out sensor design
- pulse count and sensitivity adjustable
- geared mirror array for precise area definition (PA-6812E/6820E)
- PA-6810E and PA-6812E also available in black (BL)



**PA-6614E**  
14m wide angle

as PA-6812E, plus:

- unique twin mirror and two twin pyro optics
- accurately detects human intrusion whilst rejecting small animals
- up to 6m installation height

## **TAKEX EUROPE LTD.**

---

### **Europe, Middle East, & Africa**

Aviary Court, Wade Road  
Basingstoke, Hampshire RG24 8PE  
United Kingdom

**tel: +44 (0) 1256 475555**

**fax: +44 (0) 1256 466268**

## **TAKEX AMERICA INC.**

---

### **North America**

1810 Oakland Road,  
Suite F, San Jose,  
CA 95131, USA

**tel: +1 408 747 0100**

**fax: +1 408 734 1100**

### **Australia**

4/15 Howleys Road  
Notting Hill, VIC 3168  
Australia

**tel: +61 (3) 9544 2477**

**fax: +61 (3) 9543 2342**

## **TAKEX ENGINEERING CO., LTD.**

---

### **Asia**

83-1, Gojo-sotokan-nishi, Higashino  
Yamashina-ku, Kyoto 607-8156  
Japan

**tel: +81 75 501 6651**

**fax: +81 75 593 3816**

We are more than just sensors. We are the early warning system that gives you precious seconds to react, adding distance, time, and scale to your security system.