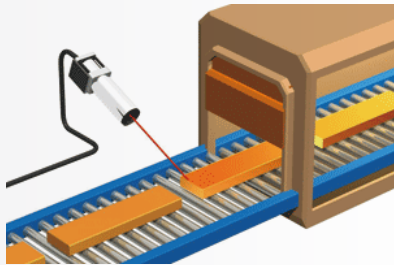


APPLICATION FOCUS: STEEL/CERAMIC

Offering quality and high-performance sensing products used in a variety of industries
For more information about sensors for STEEL/CERAMIC applications, please visit www.takex.com

DETECTION OF RED HOT STEEL

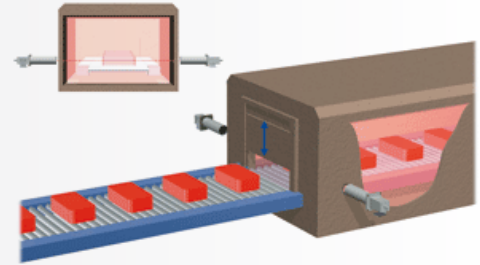
Fiber type HMD
FD-A320



Detecting the presence of material at the outlet of furnace. The detecting head is highly heat-resistant.

PRESENCE OF MATERIAL IN THE FURNACE

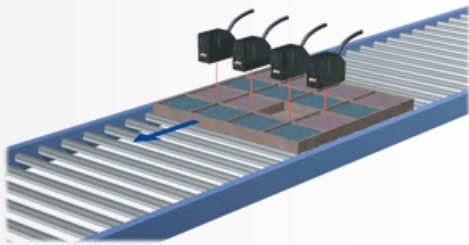
Fiber type CMD
FT44A



Detection of presence of material in the furnace. The detecting head is highly heat-resistant.

CHECKING FOR MISSING TILE

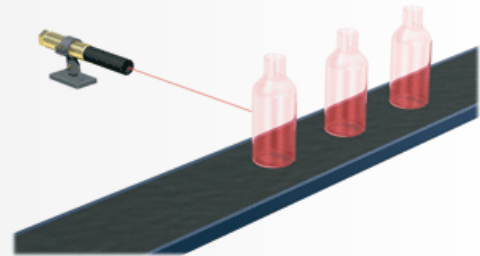
FGS/BGS Sensors
DLN Series



Pallet checked for any missing tile. Reliable detection is achieved without being affected by tile color variation.

DETECTION OF FORMED BOTTLES

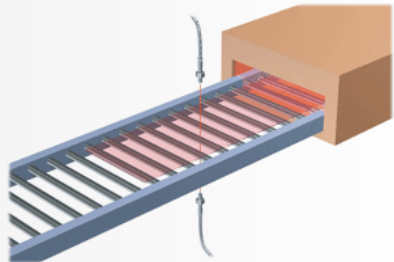
Fiber type HMD
FD-A310C



HMD used for the detection of hot formed bottles.

GLASS PLATE AT OUTLET OF FURNACE

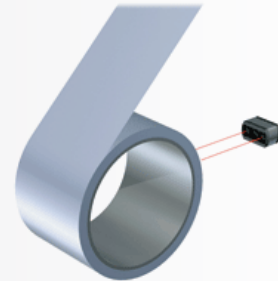
Heat Resistant Fiber
GTH500J



Heat resistant through beam fiber optic cable with lens unit attached to accomplish long distance detection.

WINDING CONTROL

BGS Sensor
DX-7AH



Control of large winder. Long detection distance allows for safe detection of large rolls.